

SECURITY SEALS BROCHURE



ITW Fastex General Products

2 - 4 Eskay Road, South Oakleigh, Victoria, 3167, Australia

PO Box 172, Oakleigh MDC, Victoria, 3166, Australia

Telephone: (+61) 03 9570 2566 Fax: (+61) 03 9570 2780

E-mail: customer.service@fastex.com.au



ITW Fastex General Products

2 – 4 Eskay Rd, South Oakleigh Vic. 3167, Australia
P.O. Box 172, Oakleigh MDC Vic. 3166, Australia
Telephone: (+61) 03 9570 2566 Fax: (+61) 03 9570 2780
E-mail: customer.service@fastex.com.au

Security Seals





ITW Fastex General Products
 2 – 4 Eskay Rd, South Oakleigh Vic. 3167, Australia
 P.O. Box 172, Oakleigh MDC Vic. 3166, Australia
 Telephone: (+61) 03 9570 2566 Fax: (+61) 03 9570 2780
 E-mail: customer.service@fastex.com.au

RINGLOCK SEAL

The Ringlock seal provides a positive barrier against unauthorised entry or tampering. Once closed, it is impossible to open without destroying the seal or leaving visible signs of damage. The Ringlock seal is a cheap, quick and effective method of providing security on a wide range of applications including storage bins, railcars, freezer doors, warehouses, tote bins, truck doors or wherever goods are stored or in transit. One piece "snap fix" thermoplastic seal. Can be applied easily and removed by hand. Parts are packed in boxes of 1,000 parts. Standard numbering is sequential alpha/numeric with 7 spaces. Various lengths available: 217mm/179mm/165mm/127mm (subject to minimum orders). Can be bar-coded, colour matched or logo embossed (subject to minimum orders).



ITW Global	ITW FASTEX Part Number	Colour	Description	Length
New Zealand	480-0084	Green	Fastex Ringlock	217mm
New Zealand	480-0231	Red	Fastex Ringlock	217mm

PULL UP SEAL

The Pull Up seal provides a positive barrier against unauthorised entry or tampering. Once closed, it is impossible to open without destroying the seal or leaving visible signs of damage. Will fit holes down to 3mm. Printed with individual alphanumeric numbering. Available with custom printing (subject to minimum orders).



ITW Global	ITW FASTEX Part Number	Colour	Description	Length
New Zealand	480-0124	White	Pull Up Seal	185mm
New Zealand	480-0191	Blue	Pull Up Seal – Fire Door	185mm



ITW Fastex General Products
 2 – 4 Eskay Rd, South Oakleigh Vic. 3167, Australia
 P.O. Box 172, Oakleigh MDC Vic. 3166, Australia
 Telephone: (+61) 03 9570 2566 Fax: (+61) 03 9570 2780
 E-mail: customer.service@fastex.com.au

CASHBAG SEAL

One piece variable length thermoplastic seal.
 Patented locking feature for added security.
 Can be applied easily by hand (tensioning tool also available).
 Cashbag Seal has the small head and a rear tab to allow removal without tools.
 Parts are packed in boxes of 1,000 parts.
 Standard numbering is sequential alphanumeric with 7 spaces.
 Special colour and logos available (subject to minimum orders).



ITW Global	ITW FASTEX Part Number	Colour	Description	Length
New Zealand	480-0187	Red	Cash-Bag Seal – Tear Tab	280mm

MAILBAG SEAL

One piece variable length thermoplastic seal.
 Patented locking feature for added security.
 Can be applied easily by hand.
 Mailbag Seal has the large head / label arm and must be removed with a tool such as a knife / scissors / tool.
 Parts are packed in boxes of 1,000 parts.
 Standard numbering is sequential alphanumeric with 7 spaces.
 Special colour and logos available (subject to minimum orders).



ITW Global	ITW FASTEX Part Number	Colour	Description	Length
New Zealand	480-0287	Red	Mail-Bag Seal	340mm



ITW Fastex General Products
 2 – 4 Eskay Rd, South Oakleigh Vic. 3167, Australia
 P.O. Box 172, Oakleigh MDC Vic. 3166, Australia
 Telephone: (+61) 03 9570 2566 Fax: (+61) 03 9570 2780
 E-mail: customer.service@fastex.com.au

GRIPRIP

Simple pull-up design allows for speedy application.
 One-piece construction combines strength with value for money.
 Complete with label holder for additional identification.
 Tear line allows for easy removal by hand.
 Large clear numbers for easy identification.



ITW Global	ITW FASTEX Part Number	Colour	Description	Length
UK	446-0001	Yellow	Griprip seal – Tear Tab	300mm

ZIP LOK

Patented locking feature for extra security.
 Designed for use with docking devices on zippered satchels or high security folded or roll top bags.
 Easily applied by hand.
 Sequentially numbered in banks of ten.
 Standard colour is blue with white alphanumeric print.



ITW Global	ITW FASTEX Part Number	Colour	Description	Length
New Zealand	480-0131	Blue	Ziplock Seal	40mm



ITW Fastex General Products
 2 – 4 Eskay Rd, South Oakleigh Vic. 3167, Australia
 P.O. Box 172, Oakleigh MDC Vic. 3166, Australia
 Telephone: (+61) 03 9570 2566 Fax: (+61) 03 9570 2780
 E-mail: customer.service@fastex.com.au

OMEGA SEAL

Plastic and metal assembly gives maximum physical security.
 Fast application by hand.
 Can only be removed with scissors.
 Stepless grip design produces a smooth strap and no sore fingers.
 Narrow strap suitable for small apertures down to 2mm.
 160mm operational length.
 Available with custom laser printing (subject to minimum orders).



ITW Global	ITW FASTEX Part Number	Colour	Description	Length
UK	440-0001	White	Omega Seal – Bar Coded	160mm
UK	440-0002	Yellow	Omega Seal – Bar Coded	160mm
UK	440-0003	Orange	Omega Seal – Bar Coded	160mm

ATM SEALS

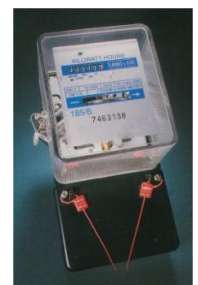
Specifically designed for use on ATM Cassettes but is versatile enough to be used in a wide range of applications.
 Fits all automatic teller machines currently in use.
 Easily applied by hand.
 Will not damage cassettes with plastic lugs - seal breaks before cassette lugs.
 Sequentially numbered in banks of ten.
 Colours available and Company Logo can be included (subject to minimum orders).



ITW Global	ITW FASTEX Part Number	Colour	Description	Length
New Zealand	480-0160	White	ATM Seals	160mm

METER SEAL

The meter seal although originally designed for use with Electricity Meters, is a simple one piece seal that can be used for a variety of applications.
 Requires a crimping tool for sealing.
 Will fit into holes down to 1.5mm.
 U.V. Stabilised to provide increase durability.
 Available in a range of colours (subject to minimum orders).



ITW Global	ITW FASTEX Part Number	Colour	Description	Length
Australia	TBA	TBA	Meter Seals	120mm



ITW Fastex General Products
 2 – 4 Eskay Rd, South Oakleigh Vic. 3167, Australia
 P.O. Box 172, Oakleigh MDC Vic. 3166, Australia
 Telephone: (+61) 03 9570 2566 Fax: (+61) 03 9570 2780
 E-mail: customer.service@fastex.com.au

CABLE SEAL

Ideal where hasps and latches are not properly aligned and where flexing of the seal is required.
 U.S. & U.K. customs approved.
 Can only be removed with wire cutters.
 Available in a variety of cable thicknesses, cable lengths with company logo and colour options lengths (subject to minimum orders).
 Standard seals sequentially numbered and branded Fastex.

ITW Global	ITW FASTEX Part Number	Colour	Description	Length
UK	481-0256	TBA	Flexi-Grips - 150	150mm



POSICHECK

Sophisticated design ensures a high level of security and maximum protection against tampering.
 Visual indicator and alignment holes to aid and check the sealing process.
 Serial numbers permanently embossed with individual alphanumeric numbering.
 HM Customs & Excise accepted Sub-Group 2.
 Fits through extremely thin slots which other seals cannot.

ITW Global	ITW FASTEX Part Number	Colour	Description	Length
UK	481-0256	Steel	Flexi-Grips - 150	150mm



GLOBE SEAL

The Fastex Globe seal is used nationwide where a secure metal seal is required.
 This ultra lightweight tinplate seal has an operational length of 195mm, is 8mm wide and is designed not to cut hands during application.
 Installation requires no tools and closure is positive and easily checked by a light 'TUG'.
 Fits through extremely thin slots which other seals cannot.
 Embossed with individual alphanumeric numbering.

ITW Global	ITW FASTEX Part Number	Colour	Description	Length
US	481-0227	Steel	Globe Seal - Fastex	195mm





ITW Fastex General Products
 2 – 4 Eskay Rd, South Oakleigh Vic. 3167, Australia
 P.O. Box 172, Oakleigh MDC Vic. 3166, Australia
 Telephone: (+61) 03 9570 2566 Fax: (+61) 03 9570 2780
 E-mail: customer.service@fastex.com.au

BOLT SEAL - SNAPPER

A high security metal & Plastic bolt seal.

Highly visible, shatter resistant, plastic coating gives clear evidence of tampering as well as protecting against corrosion.

Pull Strength of approximately 1,720kg.

Shear Strength of approximately 2,000kg.

Numbering available on both bolt and body.

Customs acceptances include USA and UK.

Fully lubricated to guard against friction attack.

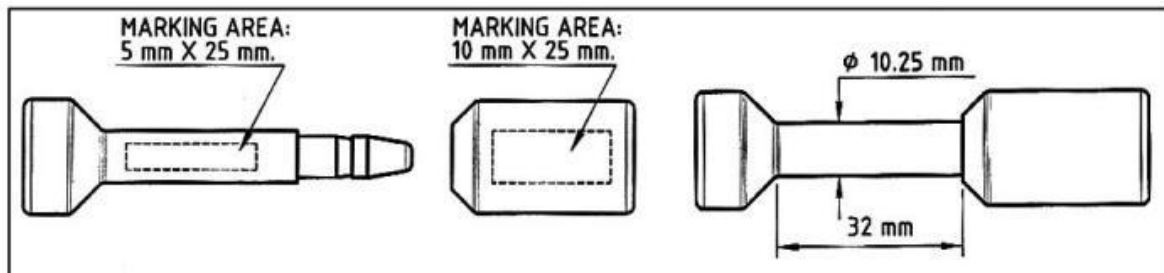
Removable only with bolt cutters.

Specially designed for sealing containers and doors of all descriptions used for:

- Sea Freight
- Rail Freight
- Road Freight
- Air Freight



ITW Global	ITW FASTEX Part Number	Colour	Description	Length
UK	441-0003	Yellow	Snapper Bolt	32mm





ITW Fastex General Products
2 – 4 Eskay Rd, South Oakleigh Vic. 3167, Australia
P.O. Box 172, Oakleigh MDC Vic. 3166, Australia
Telephone: (+61) 03 9570 2566 Fax: (+61) 03 9570 2780
E-mail: customer.service@fastex.com.au

BOLT SEAL - SNAPPER



Twist Plastic between bolt and body to separate



Fit to item to be sealed and then lock together



Test that the seal is locked



Remove with bolt cutters. The use of eye protection is recommended